

BREAKING GROUND

DELAWARE BANK COLUMBUS, OHIO

ConTrak Corporation was hired to manage the construction of a new branch of the Delaware County Bank & Trust Company.

The branch, located at 1942 Polaris Parkway in Columbus, Ohio, is a full-service bank, including a drive-through ATM and night depository stations. Additional features include conference and office space.

ConTrak collaborated with Meacham & Apel Architects Inc. on the 1,517-square-foot branch. The project was completed in March.

ConTrak Corporation is assisting in the expansion of Delaware County Bank and Trust locations throughout central Ohio by constructing four additional bank branches. Delaware Bank currently has locations in Delaware, Franklin and Union counties in Ohio.

Delaware Bank, Columbus, Ohio



CORNERSTONE

"Imagination will often carry us to worlds that never were. But without it we go nowhere."

– Carl Sagan

CONTRAK Corporation

Our Reputation is Building.

5100 Parkcenter Avenue
Dublin, OH 43017
(614) 766-9990
Fax (614) 766-1967

ConTrak Construction Company LLC
1970-D Corporate Square
Longwood, FL 32750
(407) 331-1306
Fax (407) 331-4345

www.contrakcorp.com

TRAK RECORD

JUNE 2007

THE CONTRAK PROFILE

Name

Chuck Wiseman

Title

Vice-President of Business Development and Manager of Pre-Construction Services



Time with ConTrak

Two years

Years of Construction Experience

32 years

Notable ConTrak Projects

Five Delaware County Bank branches—Columbus, Ohio; Powell, Ohio, Marysville, Ohio; and two locations in Lewis Center, Ohio

Evans Scholars at The Ohio State University – Columbus, OH

Education

Wiseman received his associate's degree from Arizona State University in business management

Professional Affiliations

Member of the Builders Exchange of Central Ohio

Family

Wiseman and his wife of 49 years have three daughters

Quote

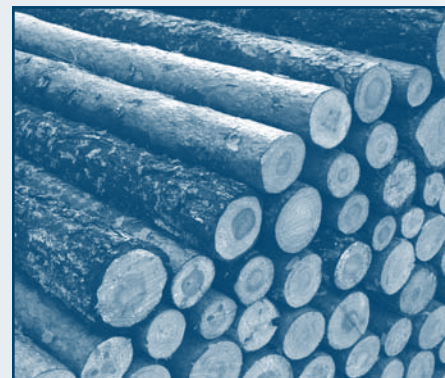
"If you think you have everything under control, you realize that you don't have enough to do."

TAKE NOTE

LEED HAS BUILDINGS GOING GREEN

As global population continues to rise, efforts to lessen the impact we have on the Earth's environment are growing. Strategies that aim to achieve sustainable use of natural resources are a hopeful effort to foster environmental health.

The U.S. Green Building Council (USGBC), a coalition of leaders from every sector of the building industry, has developed the Leadership in Energy and Environmental Design (LEED) program to cultivate sustainable site development, water conservation, energy efficiency, materials selection and indoor environmental quality. LEED promotes a whole-building approach to sustainability and quality of life. The LEED program provides the building industry with consistent, credible standards for what constitutes a green building. The architecture, construction, infrastructure and the internal and external environments created by new buildings are assessed to determine a level of LEED certification; basic, silver gold or platinum.



Several research studies provide evidence that LEED-certified buildings have reduced operating costs, provides healthier and more productive occupants, and conserve natural resources. A growing number of states offer tax credits or abatements for developing LEED buildings while many more now require that state and municipal

buildings be constructed using LEED standards. Likewise numerous federal agencies now mandate LEED standards be used in agency construction and renovation projects. Many public state universities have committed to using LEED standards for new construction as have a host of national and multi-national businesses.

LEED provides tools for measuring and documenting success for every building type and phase of a building. LEED Professional Accreditation distinguishes building professionals with the knowledge and skills to successfully steward sustainable design and the LEED certification process. USGBC offers several education options and awards accreditation upon successful completion. Accreditation strengthens competitiveness when responding to RFPs requiring LEED standards.

ConTrak Corporation has extensive experience managing construction, renovation and repairs for a variety of building types and business operations. In Ohio call (614) 766-9990 or in Florida, call (407) 331-1306 to find out how you can benefit from ConTrak's vast construction services.

PROJECT LOG

CLIENT..... Village at Powell (Phases II & III) – Columbus, Ohio
PROJECT..... This condominium development project is taking shape as ConTrak continues to manage the second and third phases, which will add 54 units to the development. Tedrick & Associates Architects LLC designed these phases.

CLIENT..... Champaign Bank – Plain City, Ohio
PROJECT..... ConTrak has begun construction of the new Champaign Bank branch located in Plain City, with completion slated for early summer 2007. It will be 3,685 square feet, including a covered entry and canopied drive-through area. Tedrick & Associates Architects LLC designed the bank branch. The Plain City branch is the fourth that ConTrak has constructed for Champaign Bank. The first two are located in Dublin, Ohio, and the third is located in Hilliard, Ohio. Champaign operates banking locations throughout Ohio, in Urbana, West Liberty, Russells Point, Plain City, Dublin, Hilliard, Lakeview and Akron.



Champaign Bank - Plain City, Ohio

PROJECT STARTS

CLIENT..... Delaware Bank – Lewis Center, Ohio
PROJECT..... ConTrak was hired as the contractor for the new 1,860-square-foot Delaware County Bank & Trust Company branch, located on Evergreen Drive in Lewis Center, Ohio. The branch will contain three drive-up teller stations, a drive-through ATM and a night depository. Additional features include a safety deposit vault with 248 safety deposit boxes.

CLIENT..... Delaware Bank – Powell, Ohio
PROJECT..... ConTrak was awarded the contract to manage the construction of a new branch of the Delaware County Bank & Trust Company, located on the corner of Sawmill Parkway and Home Road in Powell, Ohio. The 3,600-square-foot bank will feature three drive-up teller stations, 248 safety deposit boxes, a conference and break room, teller stations, office space, a drive-through ATM and a night depository.